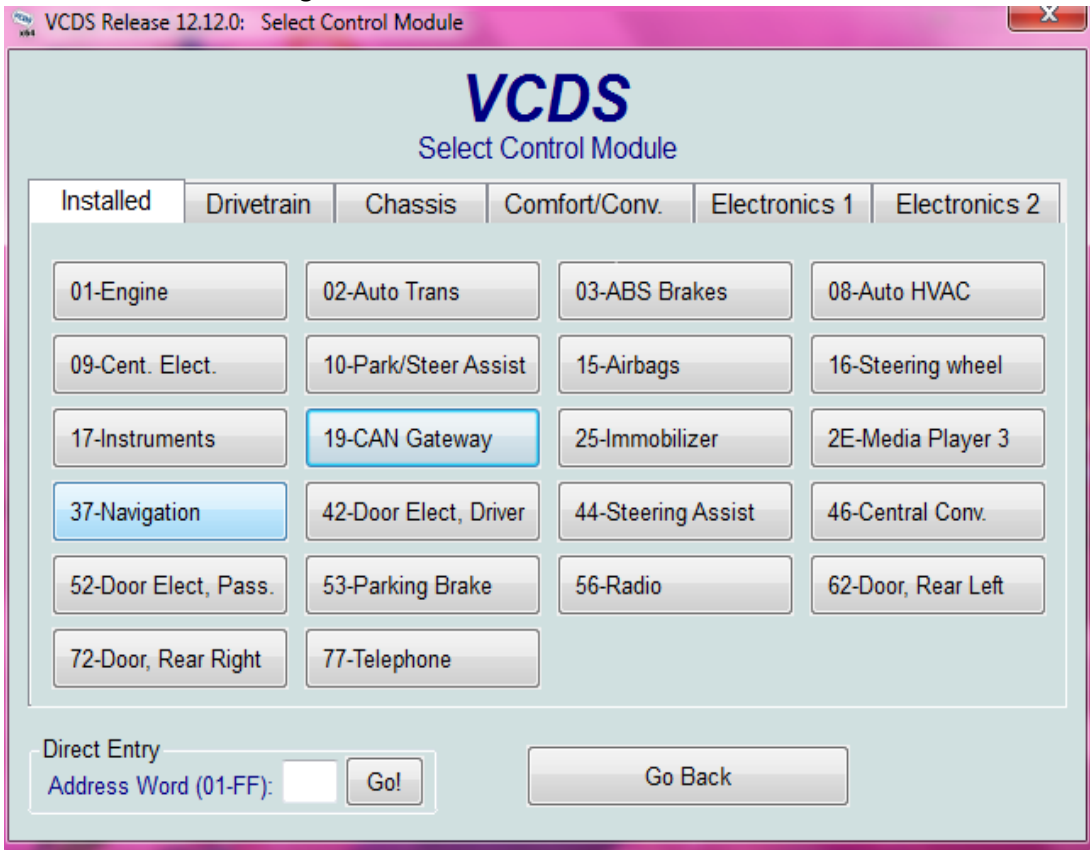
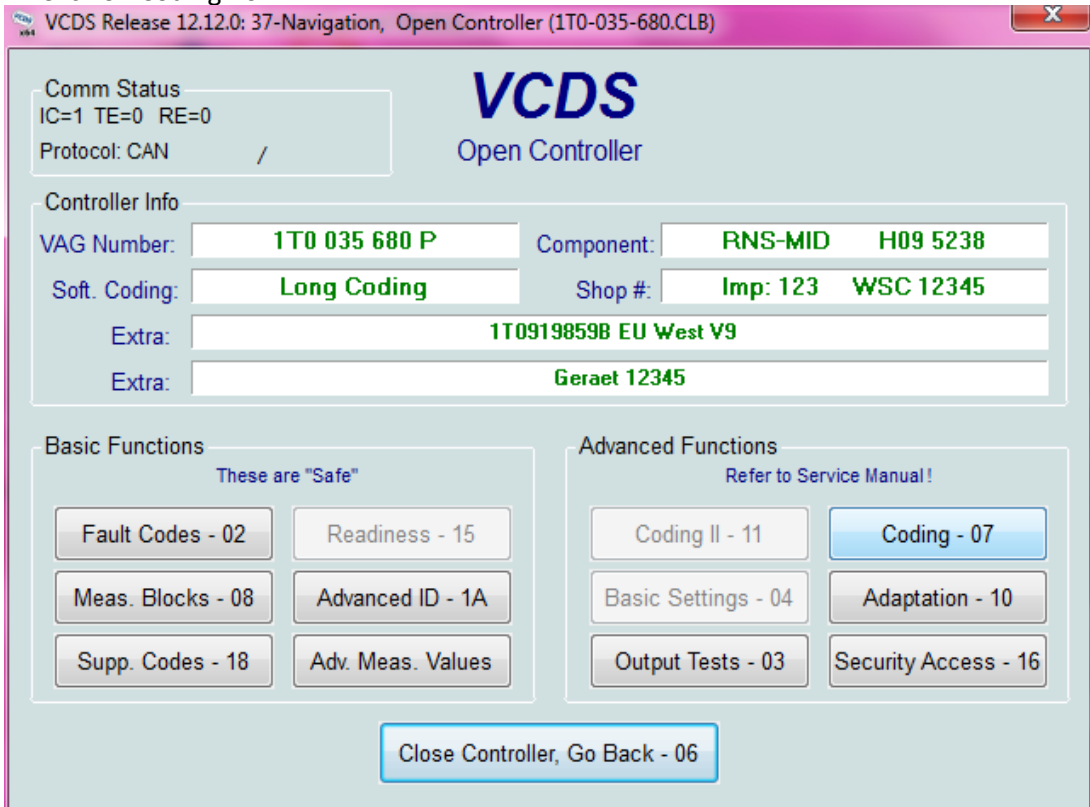


Programming information (Rear View Camera)

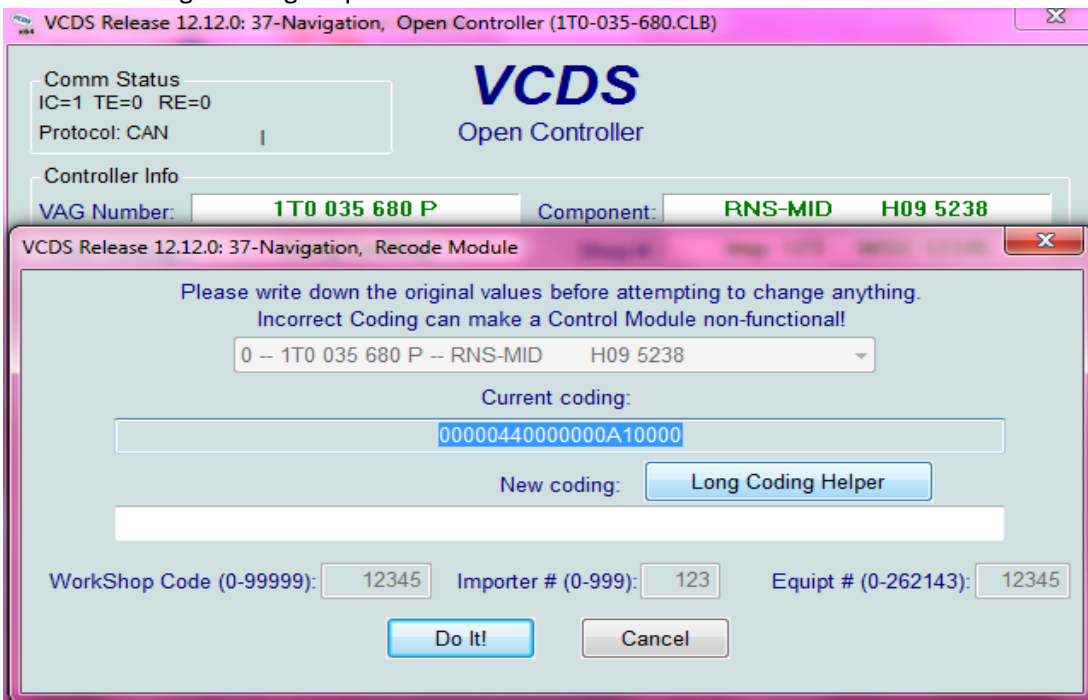
1. Click on Radio or Navigation: -37



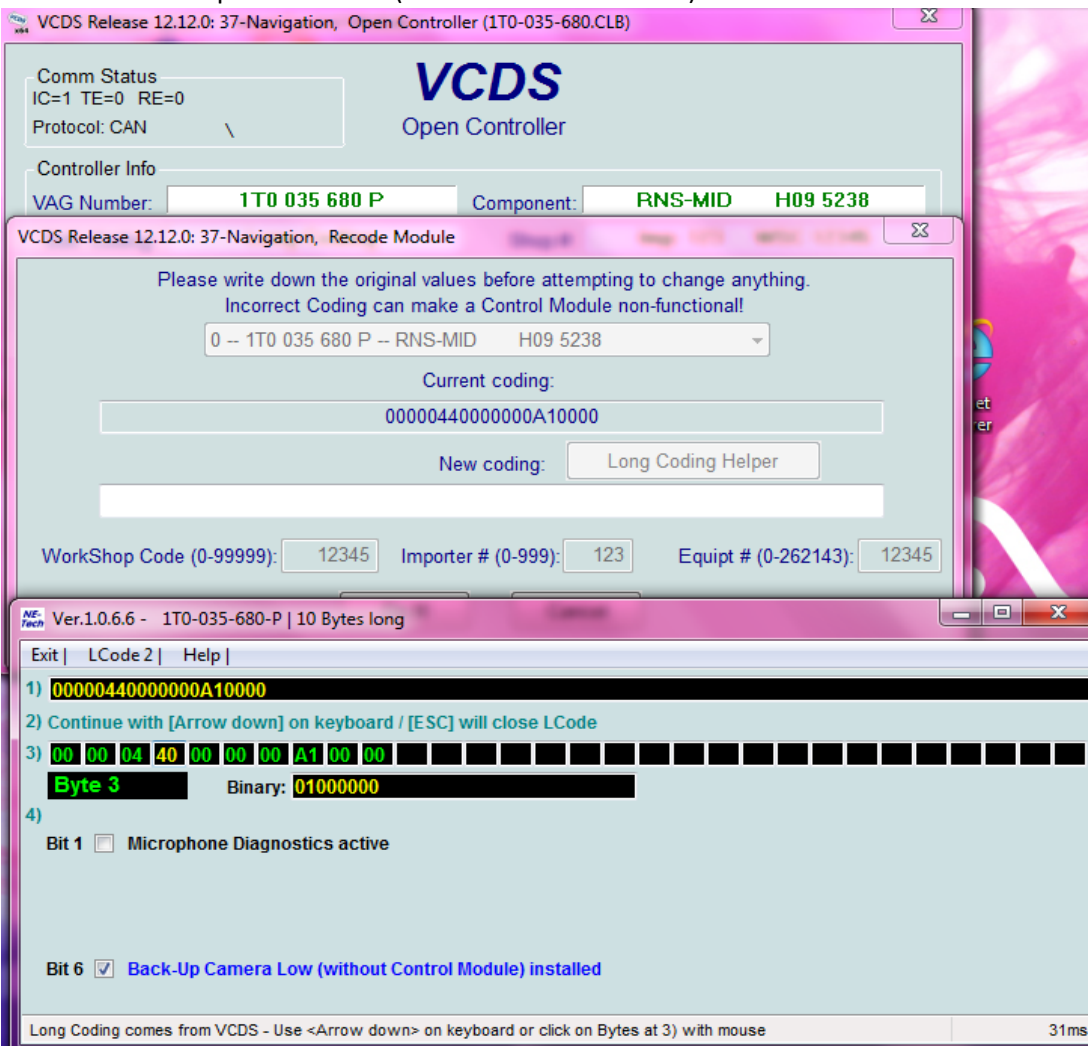
2. Click on Coding - 07



3. Click on Long Coding Helper



4. click on Back-Up Camera Low (without control module) installed

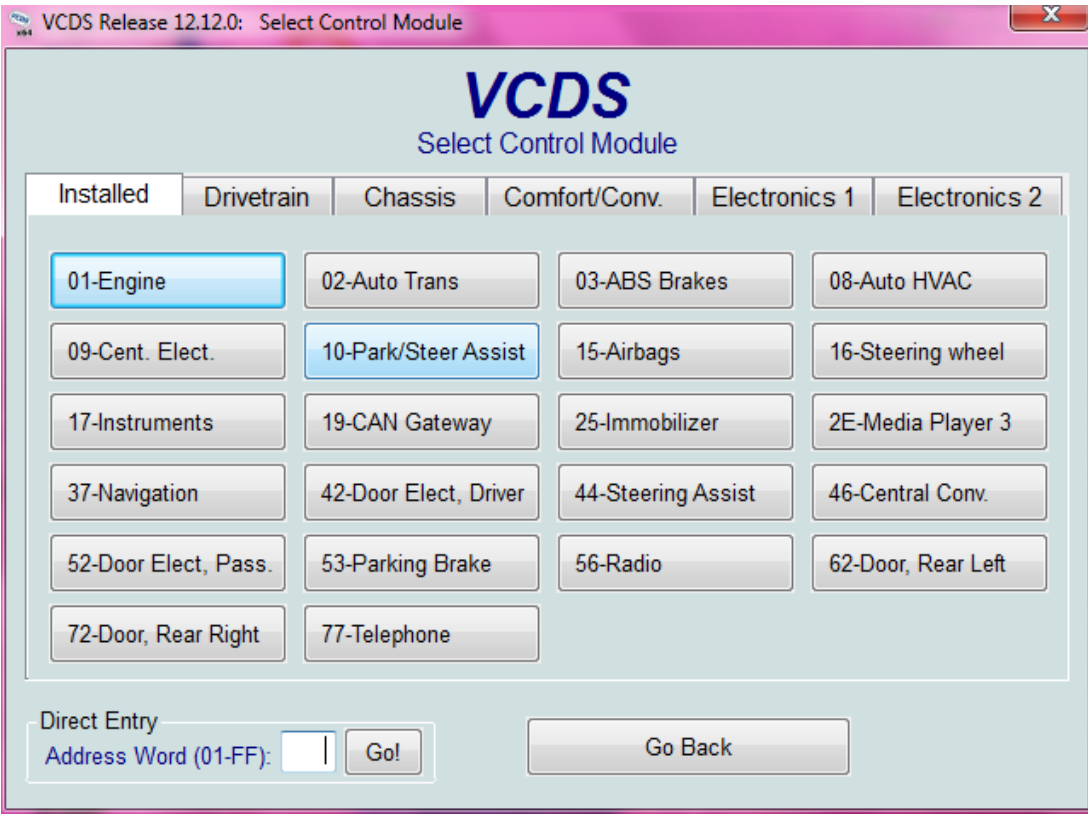


5. Exit and save programming

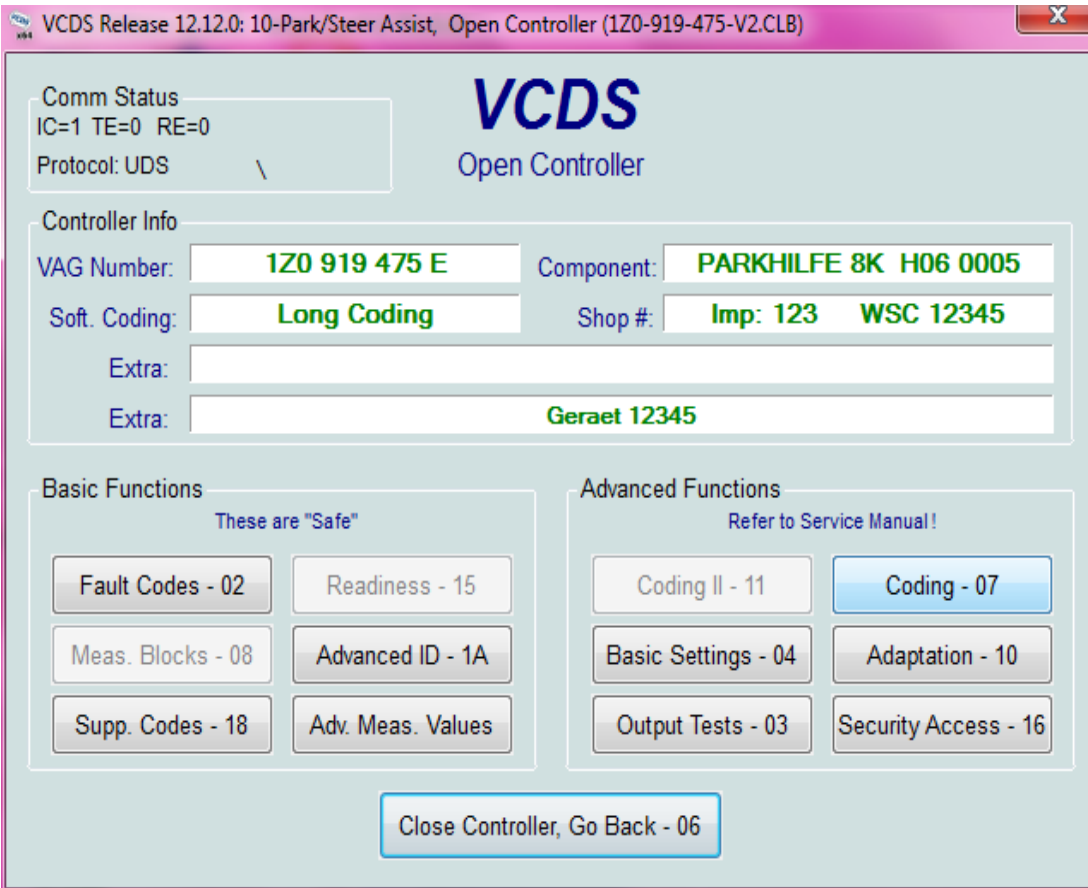
6. Restart navigation or radio unit. (or disconnect radio from battery for 10sec.)

If you have on your car installed also OPS (optical parking system), please go to OPS controller programming. See you guide below:

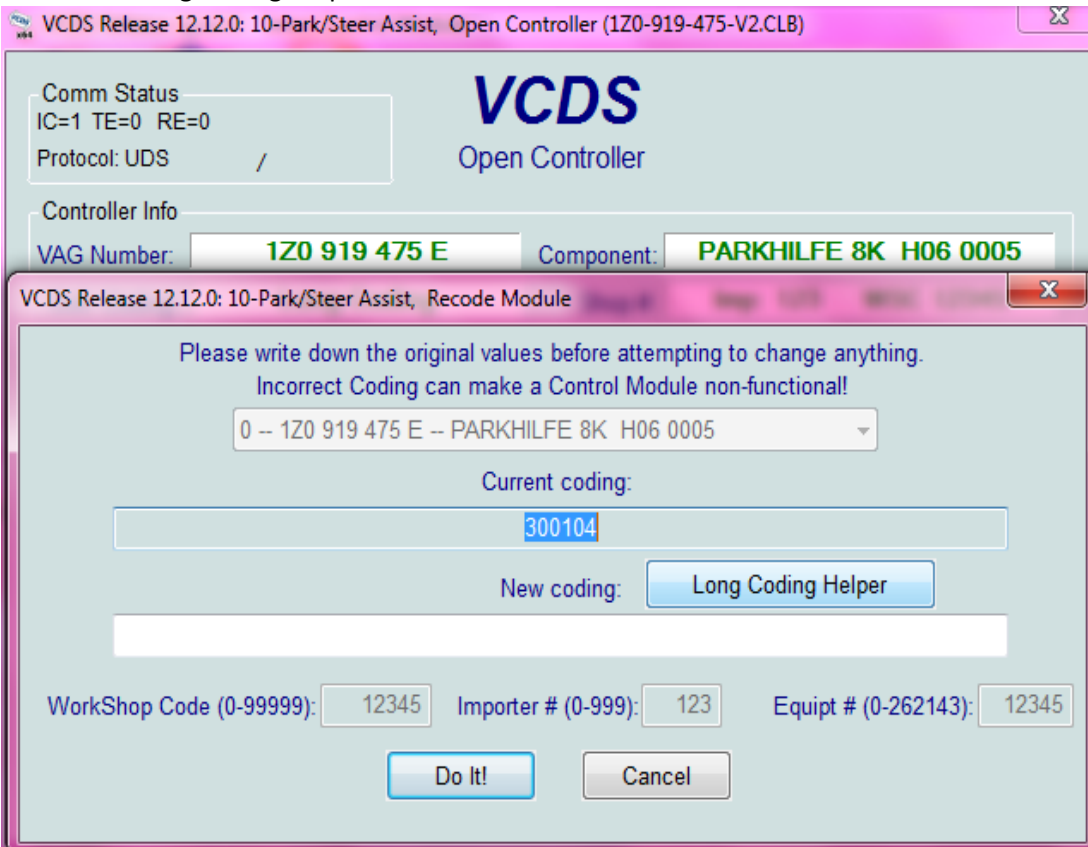
1. Click on 10-Park/Steer Assist



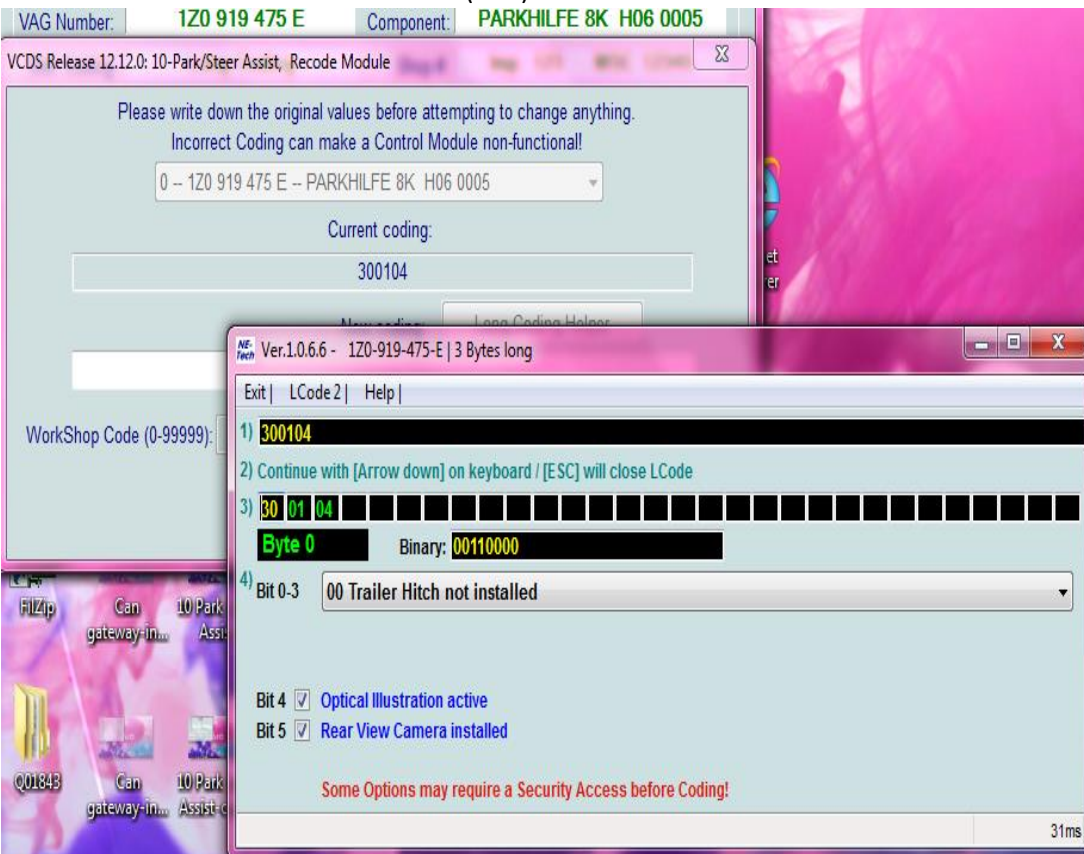
2. Click on Coding- 07



3. Click on Long Coding Helper



4. Click on Rear View Camera Installed (bit5)



5. Click on Exit and after Save.

That All!

Vertical line on the left side of the page.

