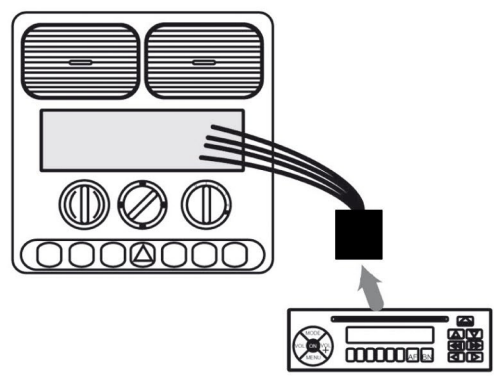


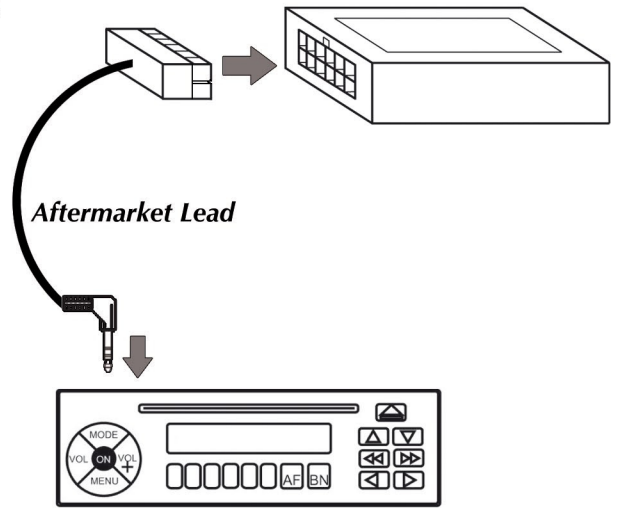
# Installation Guide

## Steering wheel control Interface

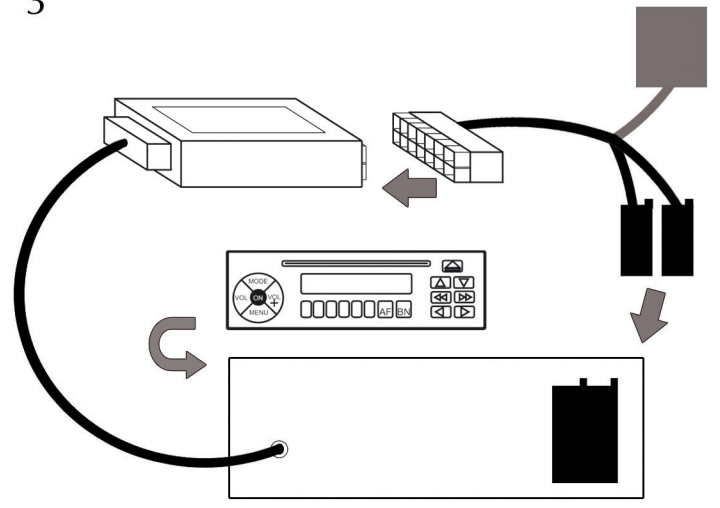
1



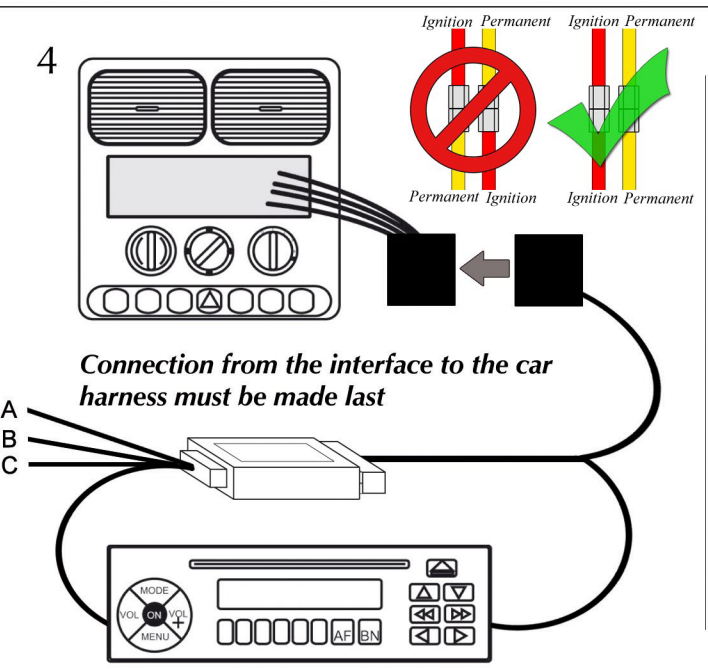
2



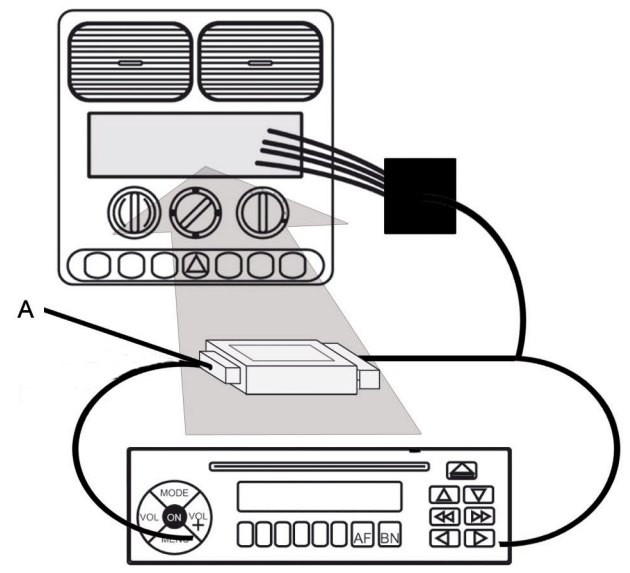
3



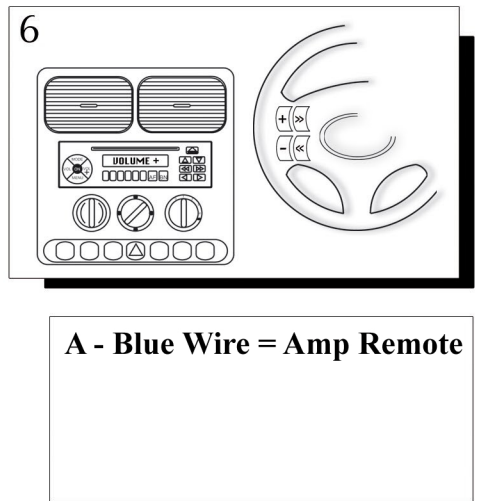
4



5



6



# User Guide

## Steering wheel control Interface

CTSHO002 - Honda Civic Hatchback 06>



### Setting the Clock and Date

1. Press and hold 'MODE' to enter clock setting mode
2. Press VOL + and VOL - to toggle between hour, minute, date, month and year. The relevant character will flash when selected
3. To change the value, press CH + and CH-
4. Once the time and date has been set, press and hold 'MODE' to exit clock setting mode.

